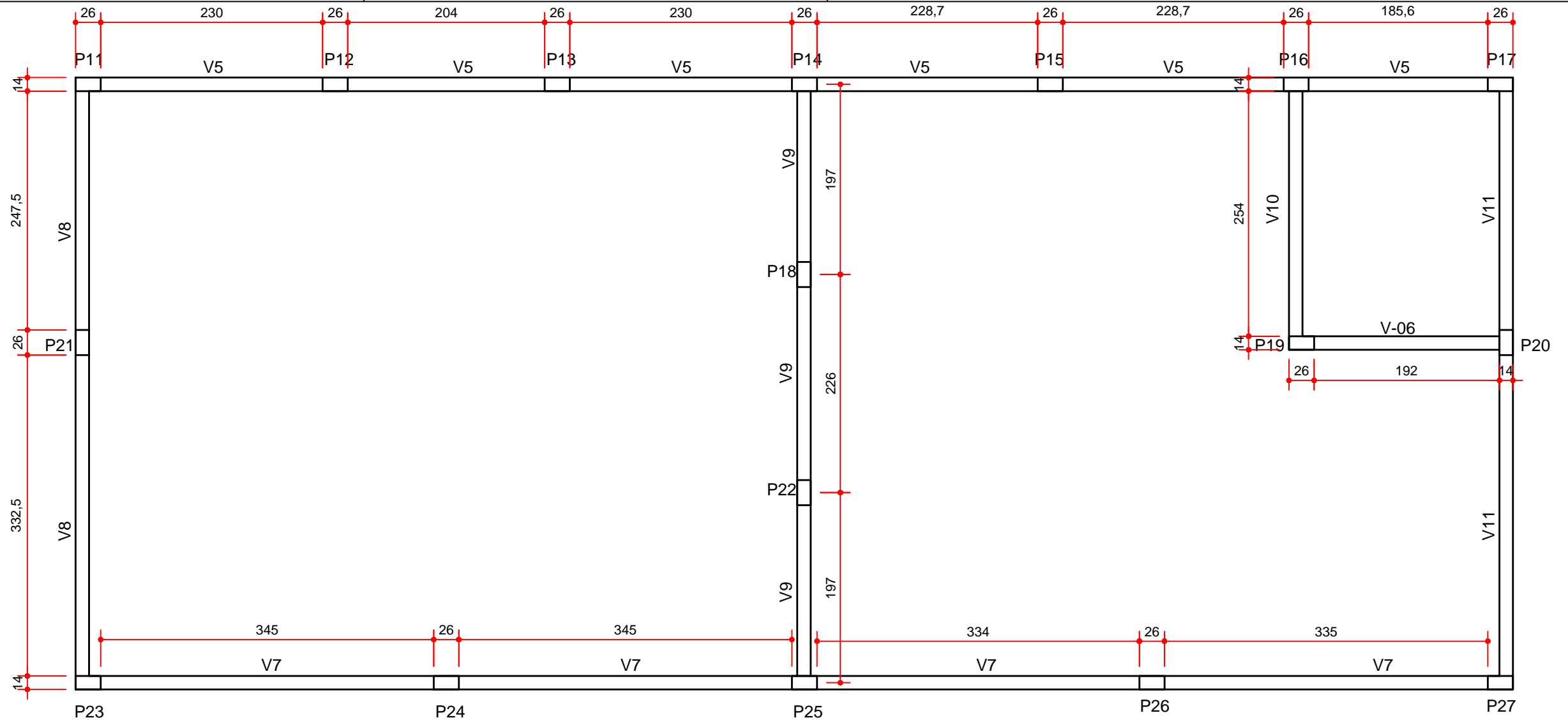


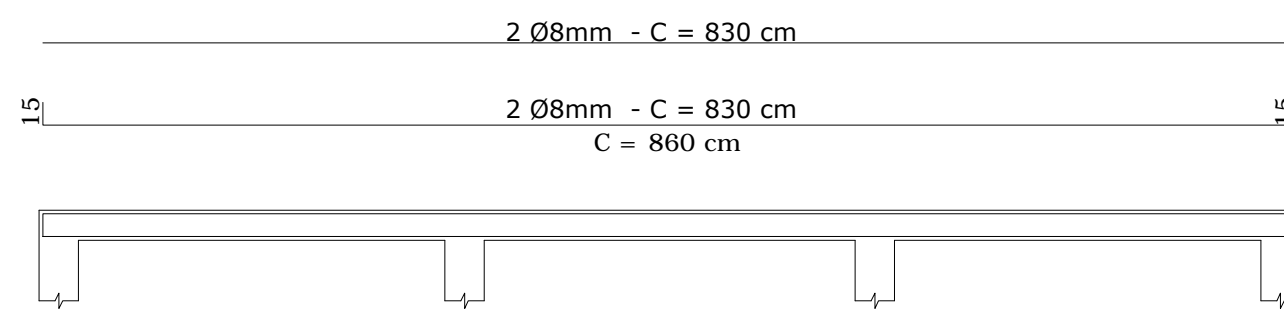
PLANTA SUPRAESTRUTURA - PILARES E VIGAS

ESCALA 1:50

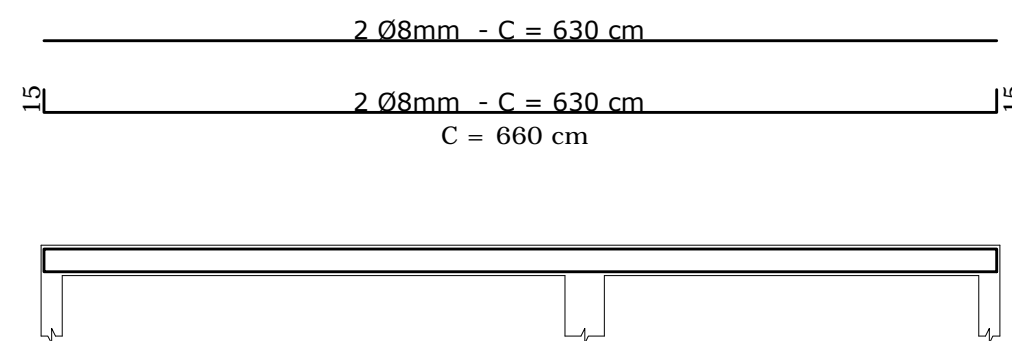


PLANTA SUPRAESTRUTURA - PILARES E VIGAS

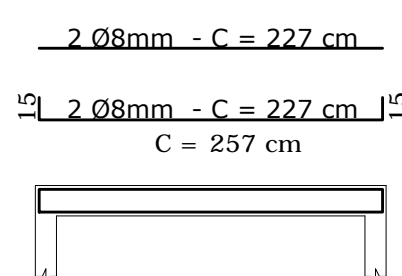
ESCALA 1:50



ESQUEMA VIGAS V1=V2
ESCALA 1:50

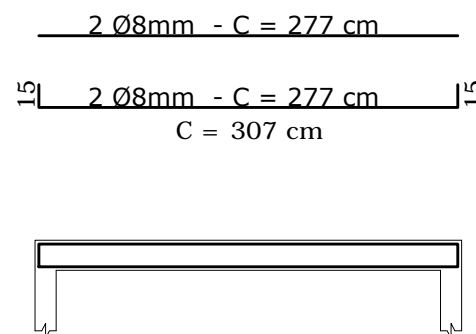


ESQUEMA VIGA V08=V11
ESCALA 1:50



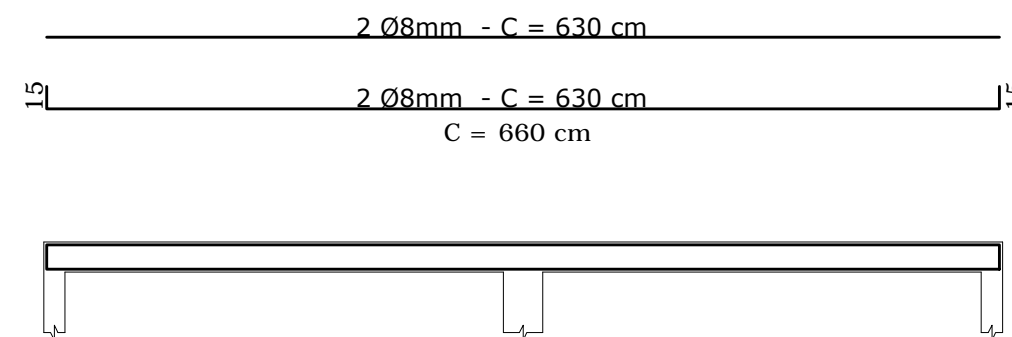
ESQUEMA VIGA V6

ESCALA 1:50

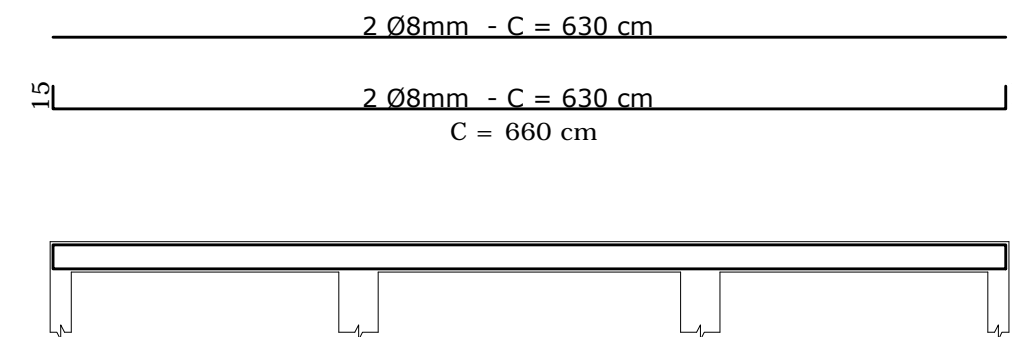


ESQUEMA VIGA V10

ESCALA 1:50

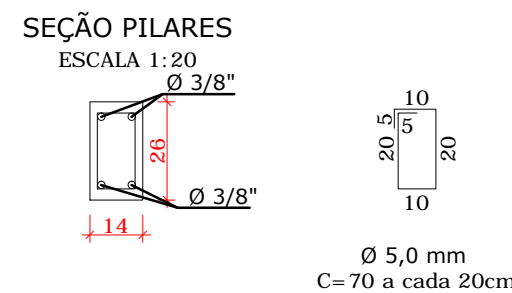


ESQUEMA VIGAS V3=V4
ESCALA 1:50

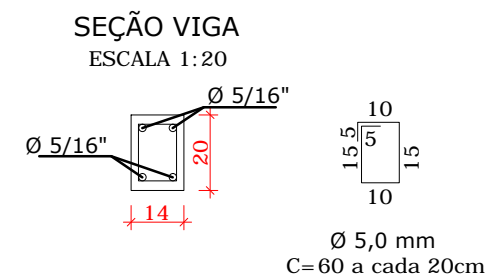


ESQUEMA VIGA V9


ESCALA 1:50



SEÇÃO PILARES
ESCALA 1:20



SEÇÃO VIGA
ESCALA 1:20

		<h1>AMPLIAÇÃO DA ESCOLA MUNICIPAL DO CAMPO RUI BARBOSA</h1>	
<div></div>			
<div>03/04</div>		<div> <div>PROPRIETÁRIO:</div> <div>Prefeitura Municipal de Contenda - PR</div> <div>Prefeito Carlos Eugênio Stabach</div> </div>	
<div> <div>PLANTAS PILARES E VIGAS</div> <div>ESQUEMA VIGAS</div> <div>SEÇÕES</div> </div>		<div> <div>AUTOR DO PROJETO:</div> <div>Engenheira Civil Daiana Priscila Souza Leite</div> <div>CREA-PR 184.547/D</div> </div>	
		<div> <div>RESPONSÁVEL TÉCNICO:</div> <div>Engenheira Civil Daiana Priscila Souza Leite</div> <div>CREA-PR 184.547/D</div> </div>	
<div>D A T A</div> <div>OUTUBRO/2020</div>	<div>DESENHO</div> <div>DAIANA PRISCILA</div> <div>ESCOLA</div>	<div>End.: Av. João Franco n.º 400</div> <div>Centro - Contenda/PR</div> <div>telefones= (041) 3625 1212 ; 99171268</div>	